



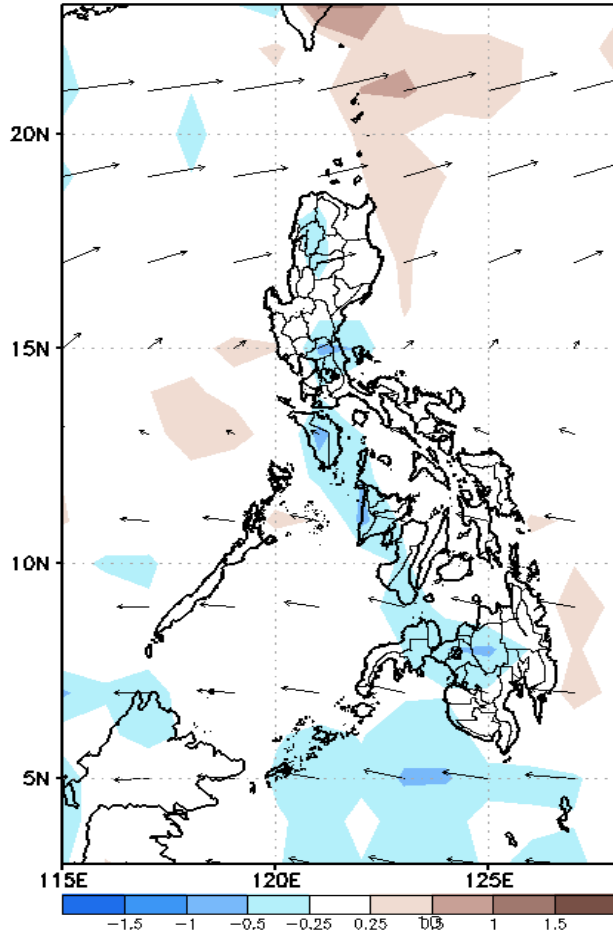
# Week 1 & Week 2 Forecast for the Philippines using GEFS Model



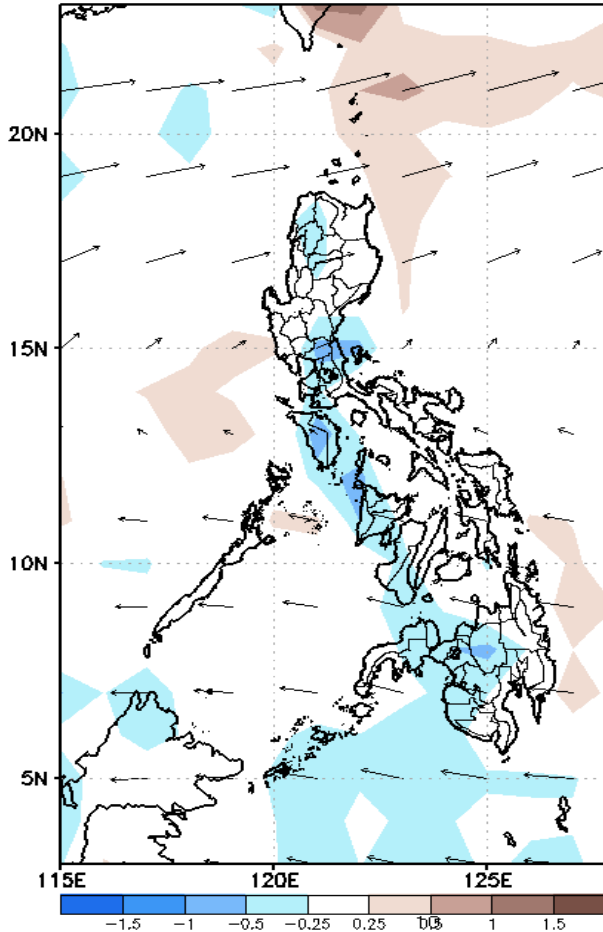
# GEFS Week-1 Forecasts: Divergence & Wind Anomaly

Week 1: Nov 08-14, 2021

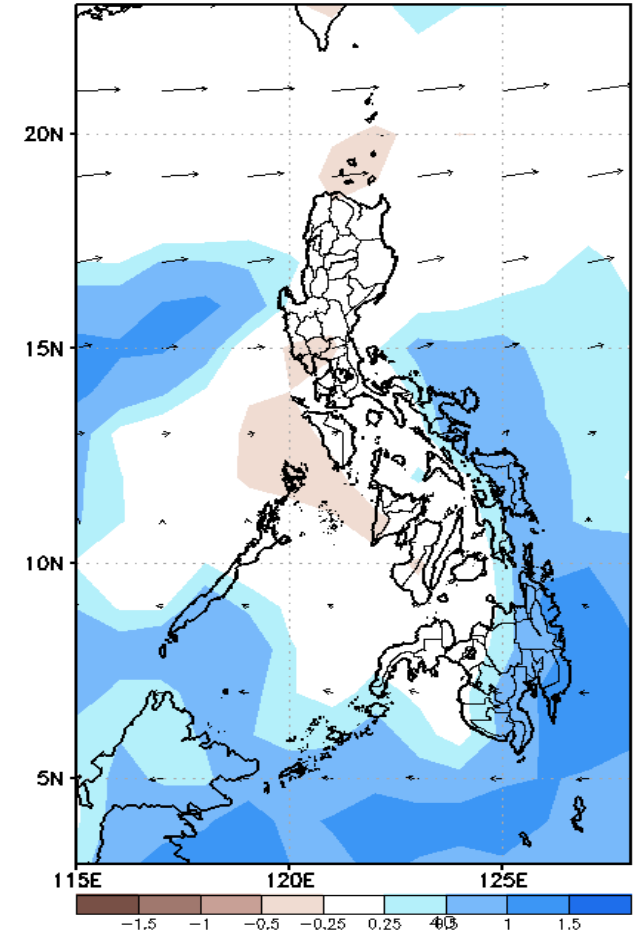
GEFS Week-1 850-hPa Divergence and Wind Anom  
Valid: 20211108 - 20211114



GEFS Week-1 700-hPa Divergence and Wind Anom  
Valid: 20211108 - 20211114



GEFS Week-1 200-hPa Divergence and Wind Anom  
Valid: 20211108 - 20211114

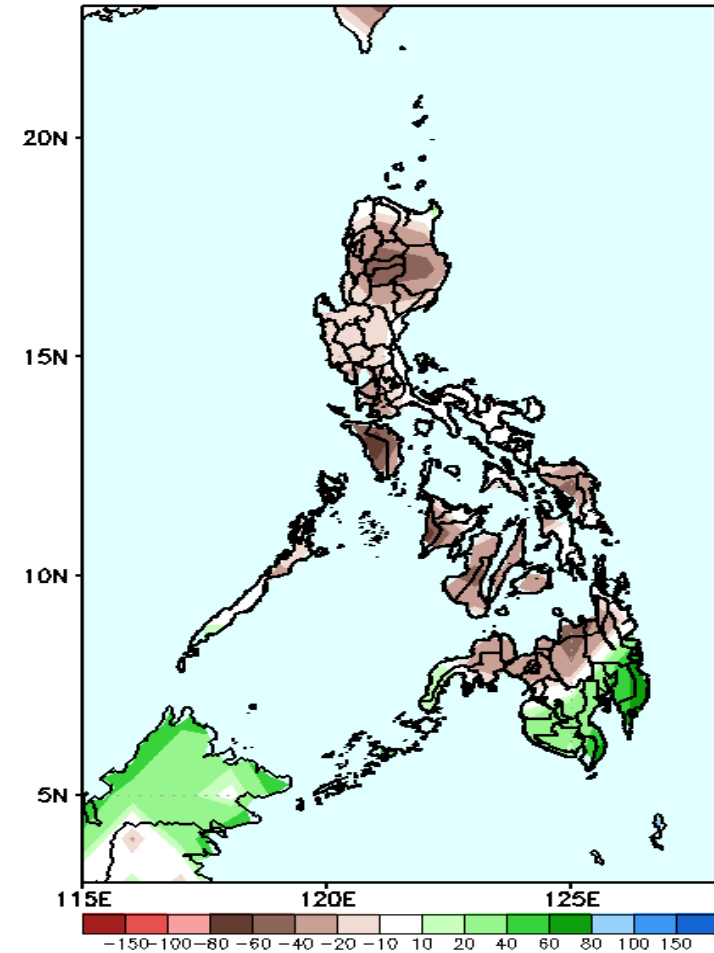


Upper and low level Divergence suggest likelihood of light precipitation in Bicol region, Eastern Visayas and most parts of Mindanao. Northeast Monsoon affecting Northern-Extreme Northern Luzon while Easterlies affecting the rest of the country during the forecast period.

# Precipitation Anomaly and Exceedance Probability > 25/50 mm

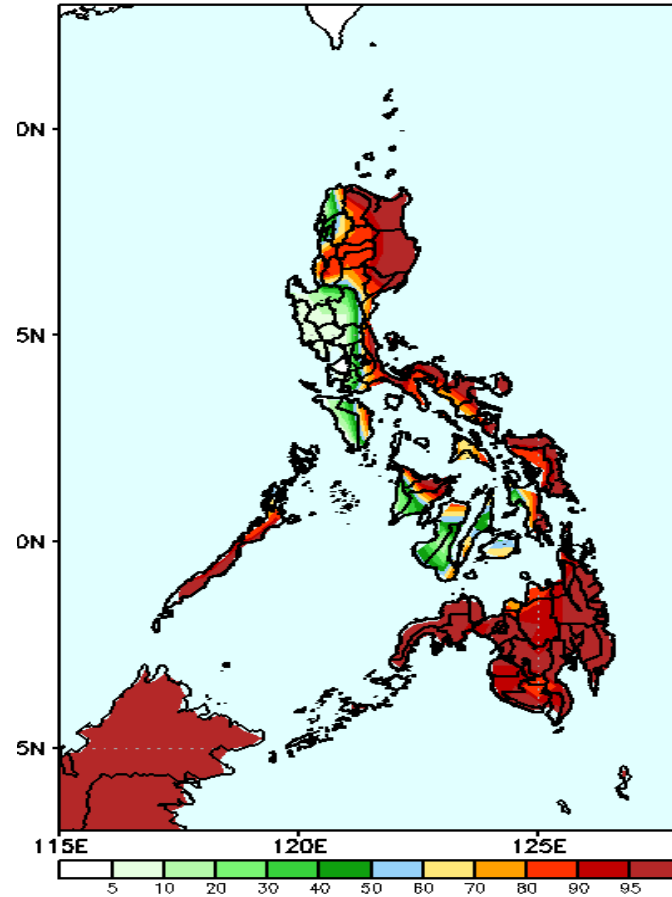
**Week 1: Nov 08-14, 2021**

GEFS Week-1 Precip Anomaly  
Valid: 20211108 - 20211114



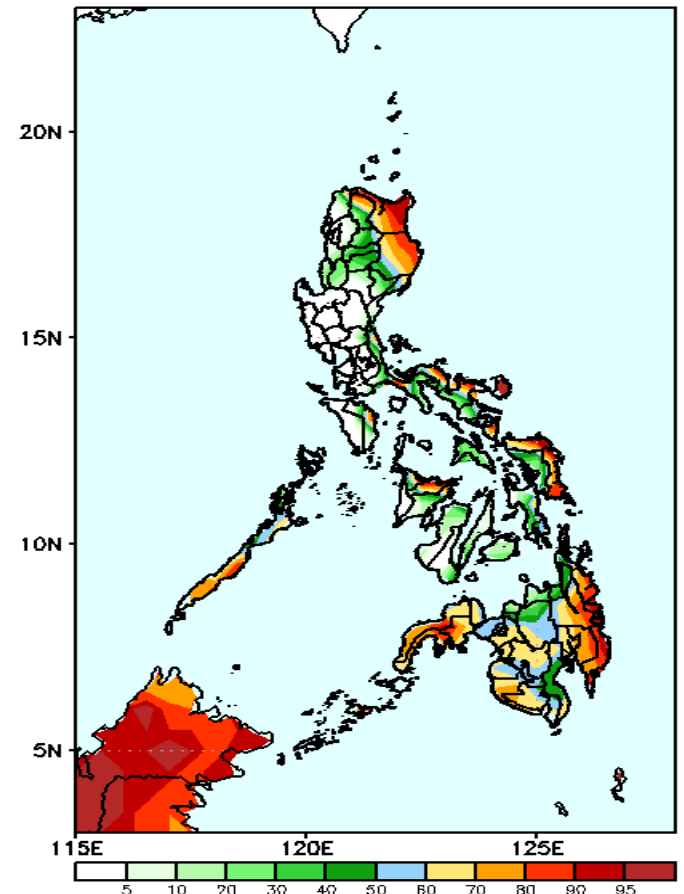
Rainfall deficit of 20-80mm in most parts of the country is expected except in the southern part of Mindanao where is increase of rainfall of 20-80mm during the forecast period.

GEFS Week-1 Exceedance Prob. > 25mm  
Valid: 20211108 - 20211114



High probability of rainfall to exceed 25mm in eastern parts of Luzon, Cordillera Region, most parts of Visayas (except Antique, Iloilo and Negros province) & Mindanao while less likely for the rest Luzon during the forecast period.

GEFS Week-1 Exceedance Prob. > 50mm  
Valid: 20211108 - 20211114

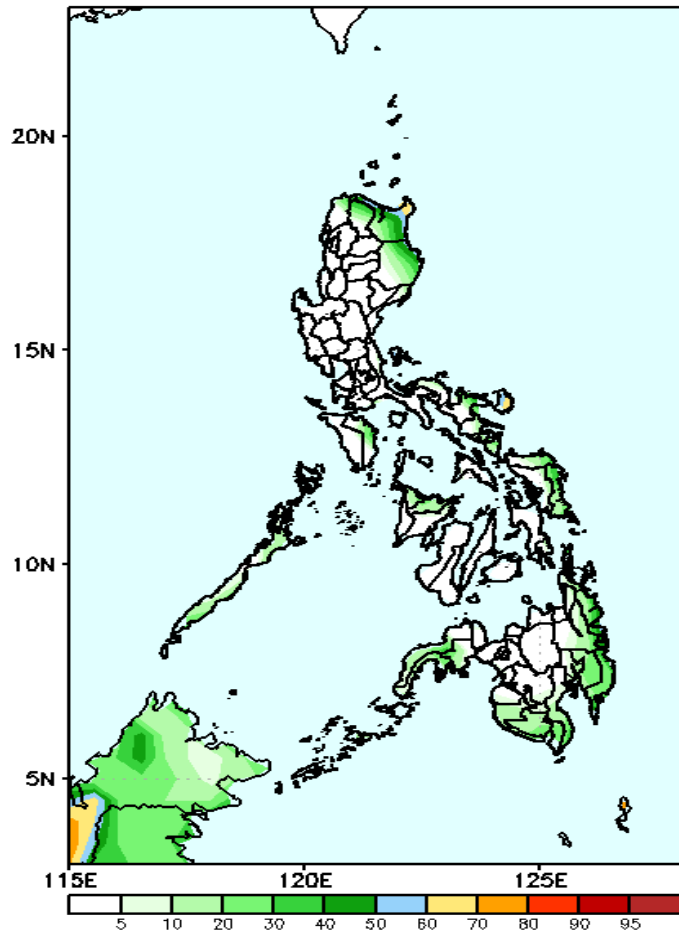


High probability of rainfall to exceed 50mm in Apayao, Cagayan, Isabela, eastern parts of Bicol Region, Northern & Eastern Samar, and most parts of eastern and western Mindanao while less likely for the rest of the country during the forecast period.

# Exceedance Probability > 100/150/200 mm

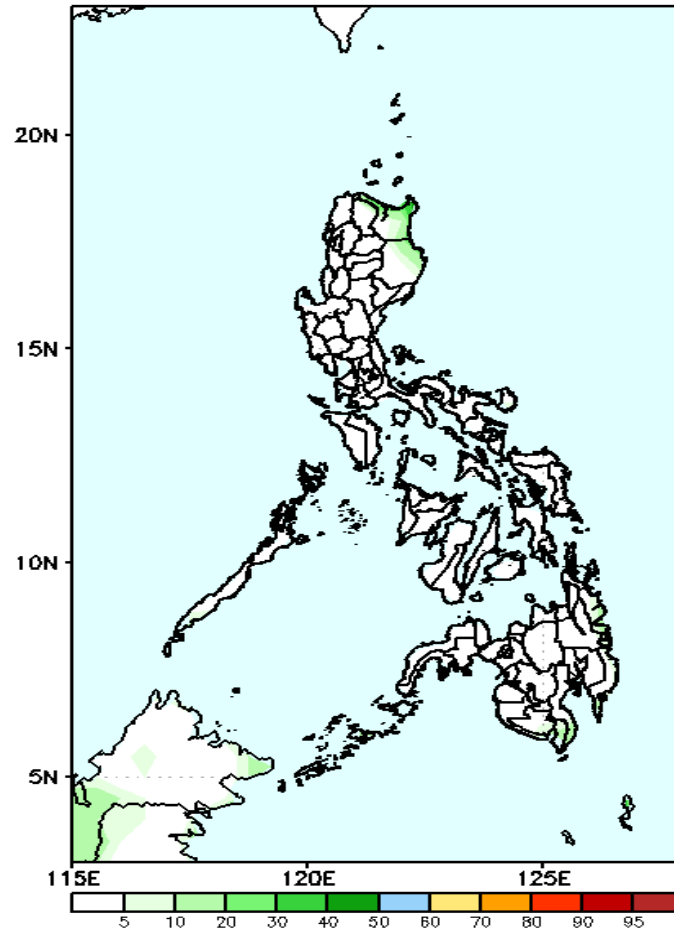
## Week 1: Nov 08-14, 2021

GEFS Week-1 Exceedance Prob. > 100mm  
Valid: 20211108 - 20211114



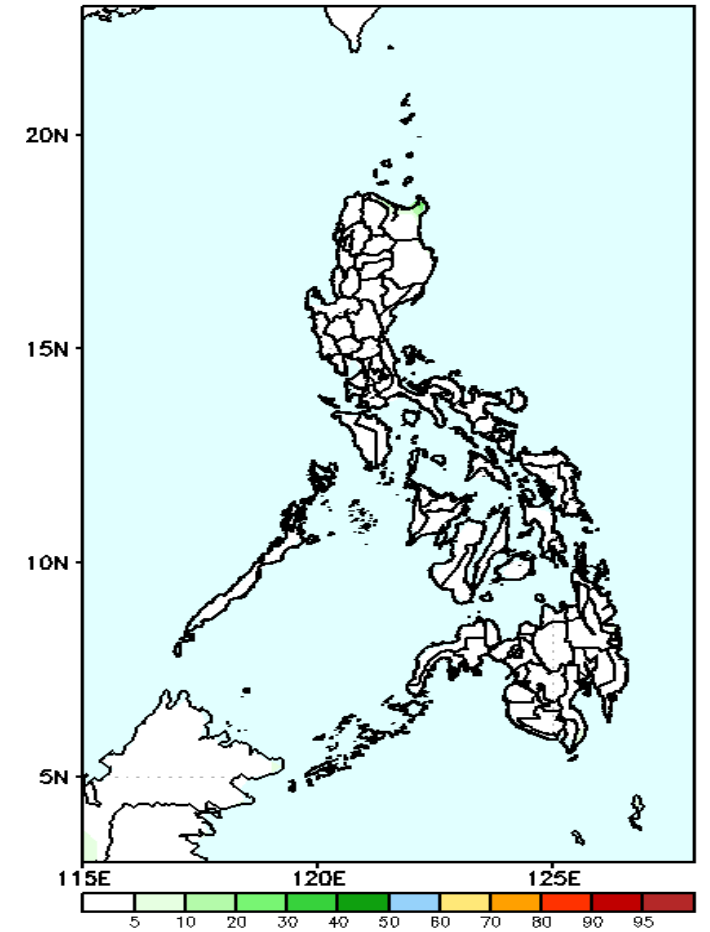
Less probability of rainfall to exceed 100mm in most parts of the country is expected during the forecast period.

GEFS Week-1 Exceedance Prob. > 150mm  
Valid: 20211108 - 20211114



Less probability of rainfall to exceed 150mm in most parts of the country is expected during the forecast period.

GEFS Week-1 Exceedance Prob. > 200mm  
Valid: 20211108 - 20211114



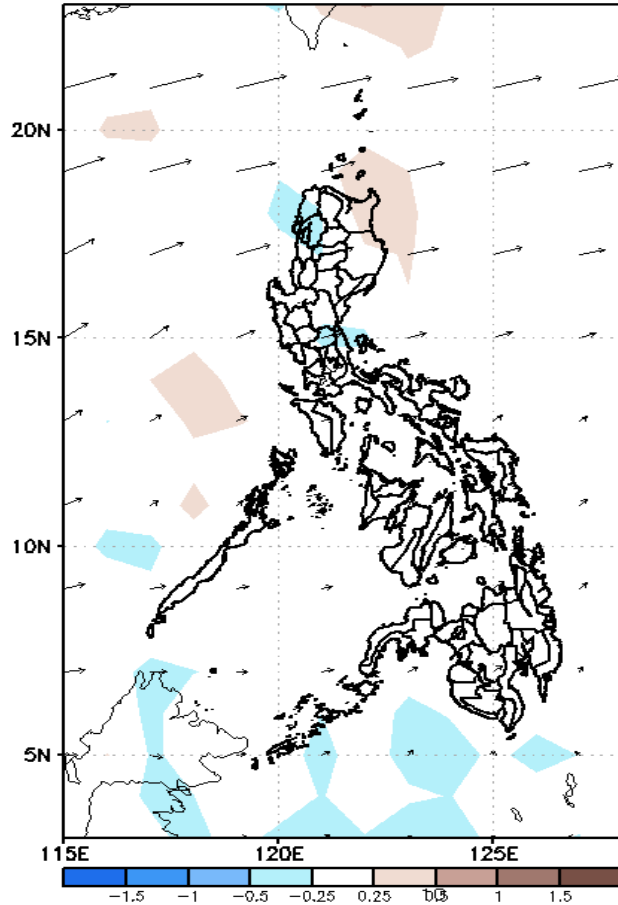
Less probability of rainfall to exceed 200mm in most parts of the country is expected during the forecast period.



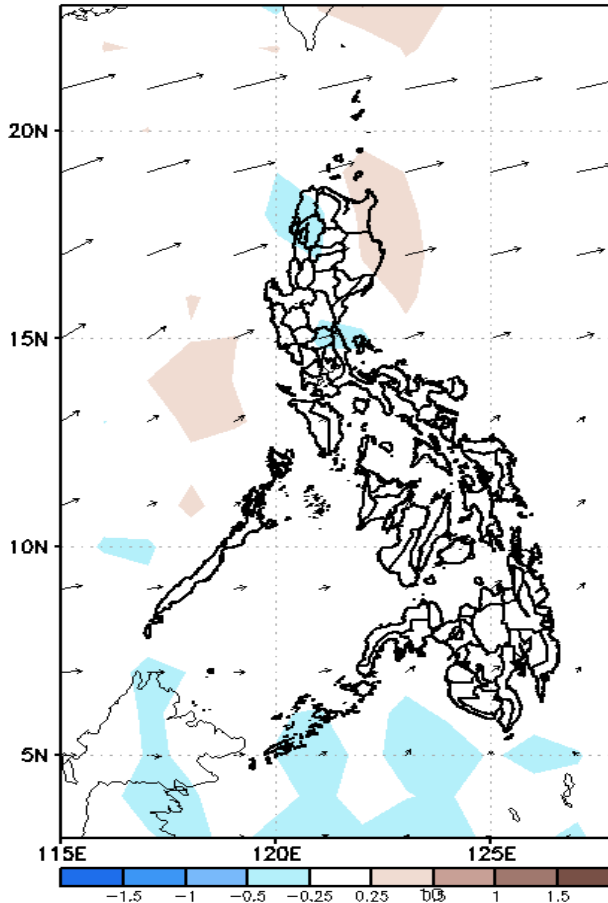
# GEFS Week-2 Forecasts: Divergence & Wind Anomaly

## Week 2: Nov 15-21, 2021

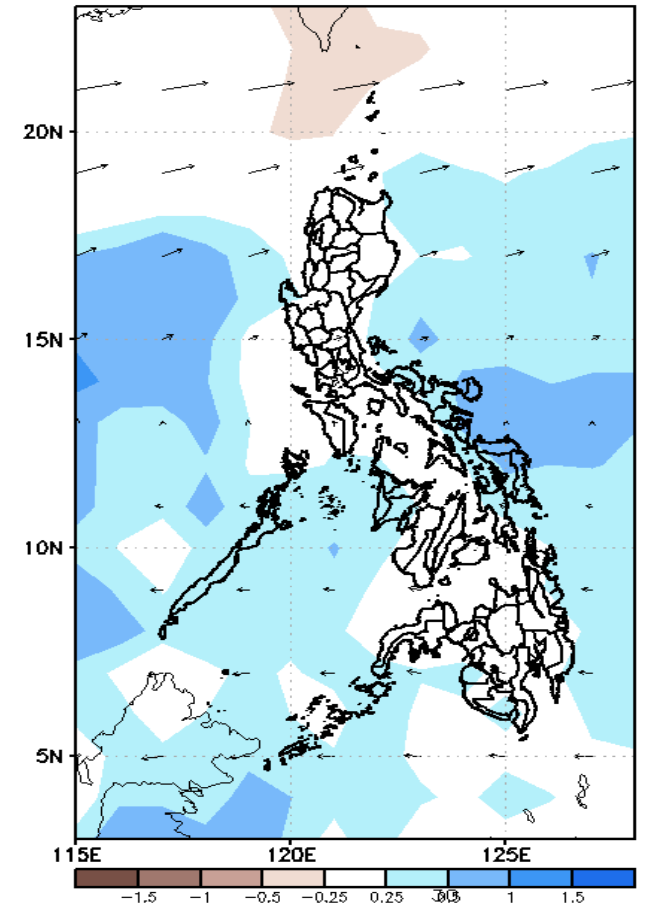
GEFS Week-2 850-hPa Divergence and Wind Anom  
Valid: 20211115 - 20211121



GEFS Week-2 700-hPa Divergence and Wind Anom  
Valid: 20211115 - 20211121



GEFS week-2 200-hPa Divergence and Wind Anom  
Valid: 20211115 - 20211121

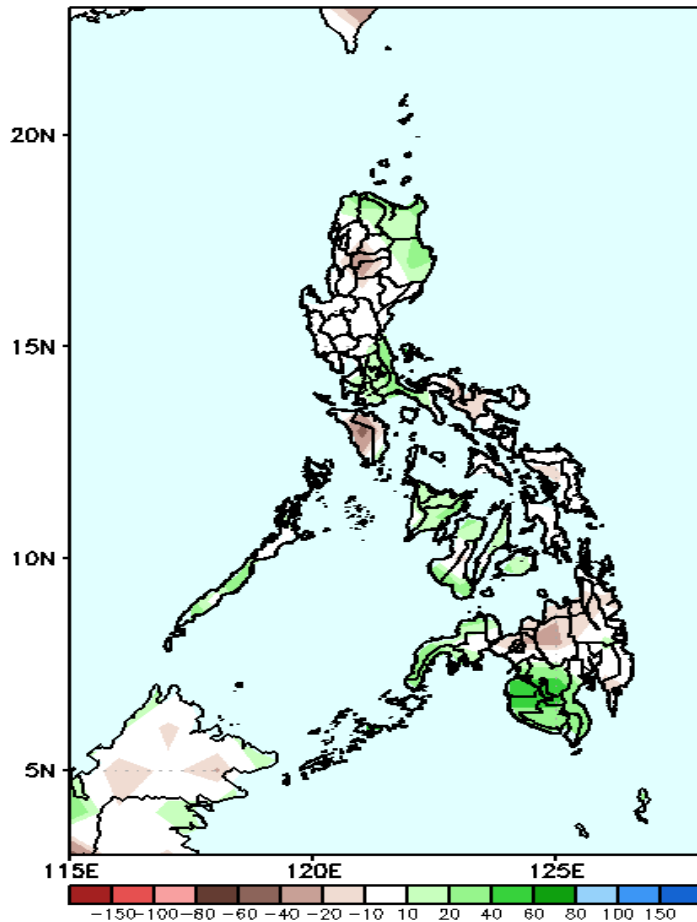


Upper and low level Divergence suggest likelihood of light precipitation in Bicol region, Palawan, Eastern Visayas and some parts of Mindanao. Northeast Monsoon affecting Extreme Northern Luzon while Easterlies affecting most parts of the country during the forecast period.

# Precipitation Anomaly and Exceedance Probability > 25/50 mm

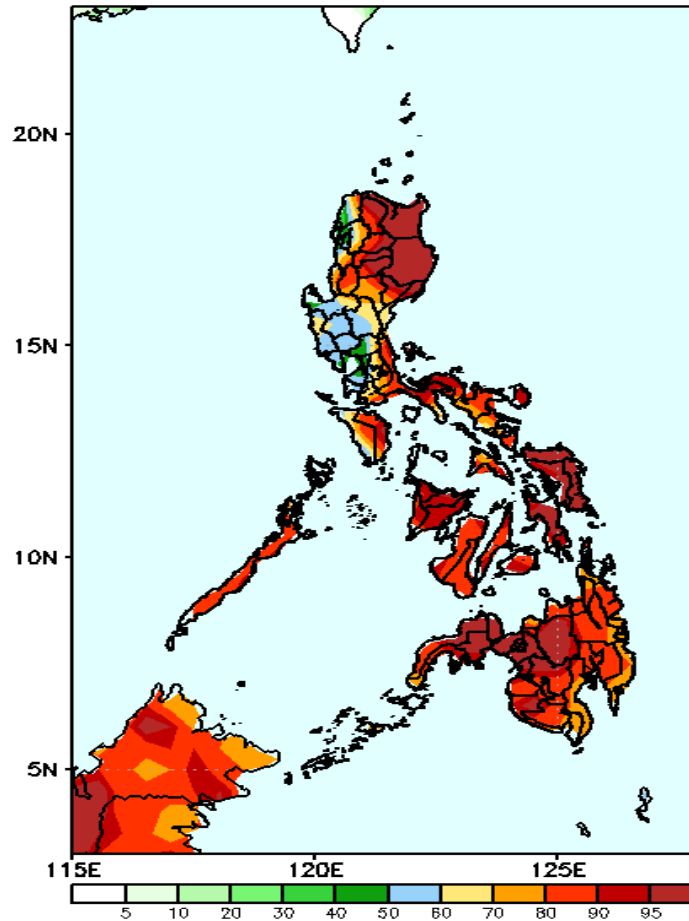
## Week 2: Nov 15-21, 2021

GEFS Week-2 Precip Anomaly  
Valid: 20211115 - 20211121



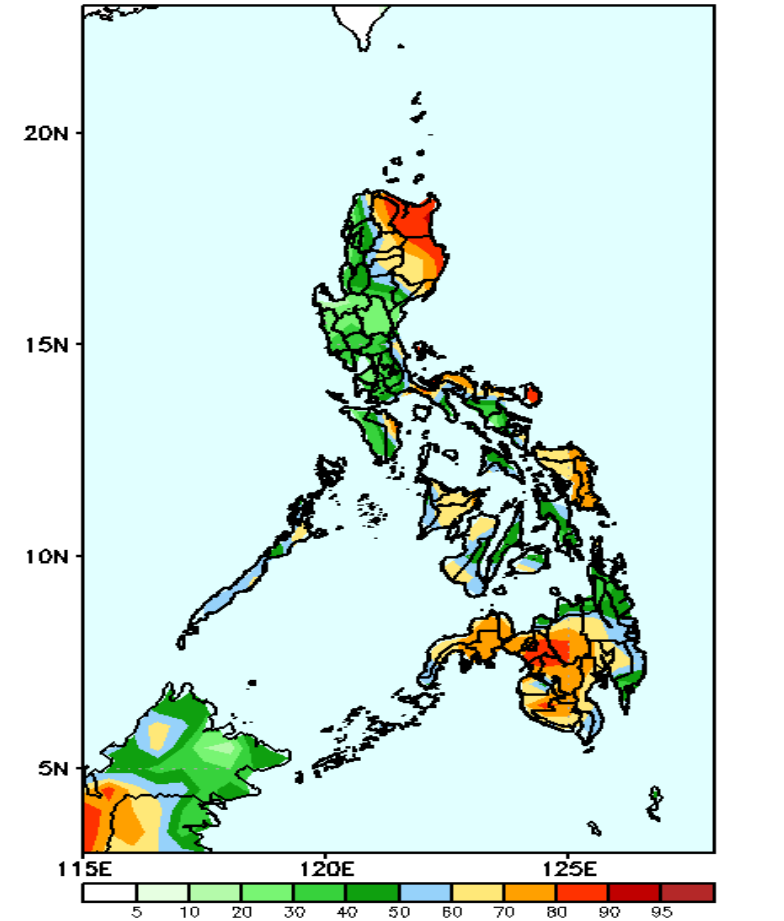
Increase of rainfall of 20-60mm in Apayao, Cagayan, Isabela CALABARZON, western Visayas and Western Mindanao while rainfall deficit of 10-20mm for the rest of the country during the forecast period.

GEFS Week-2 Exceedance Prob. > 25mm  
Valid: 20211115 - 20211121



High probability of rainfall to exceed 25mm in most parts of the country during the forecast period.

GEFS Week-2 Exceedance Prob. > 50mm  
Valid: 20211115 - 20211121

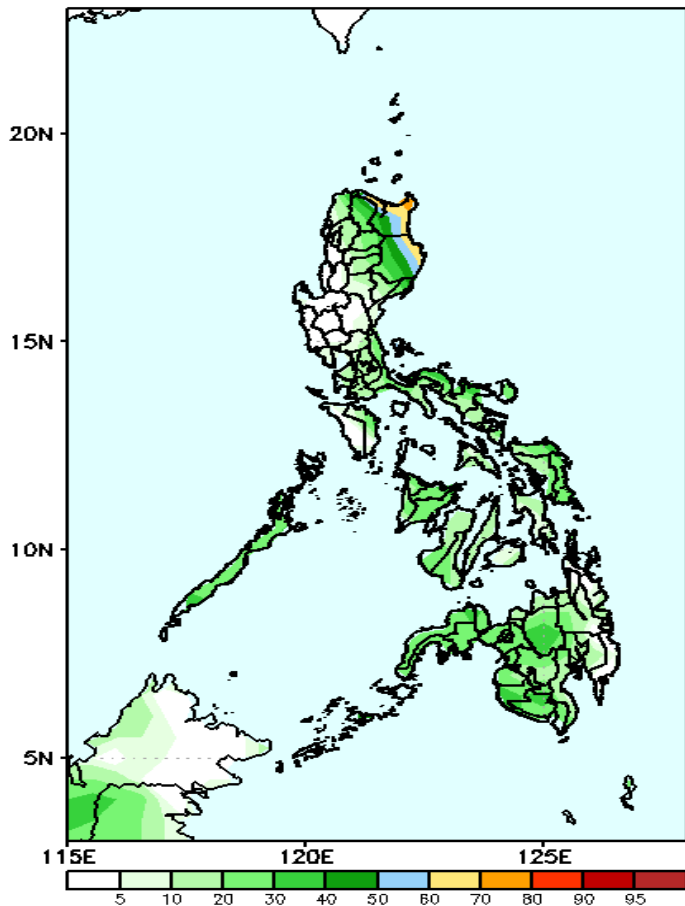


High probability of rainfall to exceed 50mm in Apayao, Cagayan, Isabela, Catanduanes, parts of Bicol Region, Eastern Samar and western & central Mindanao while less likely for the rest of the country during the forecast period.

# Exceedance Probability > 100/150/200 mm

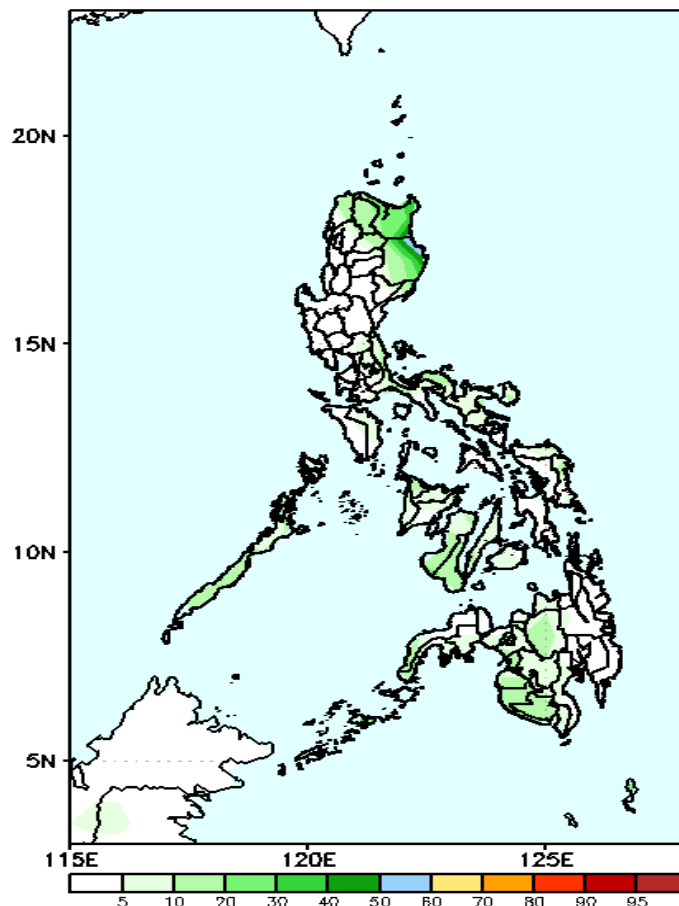
## Week 2: Nov 15-21, 2021

GEFS Week-2 Exceedance Prob. > 100mm  
Valid: 20211115 - 20211121



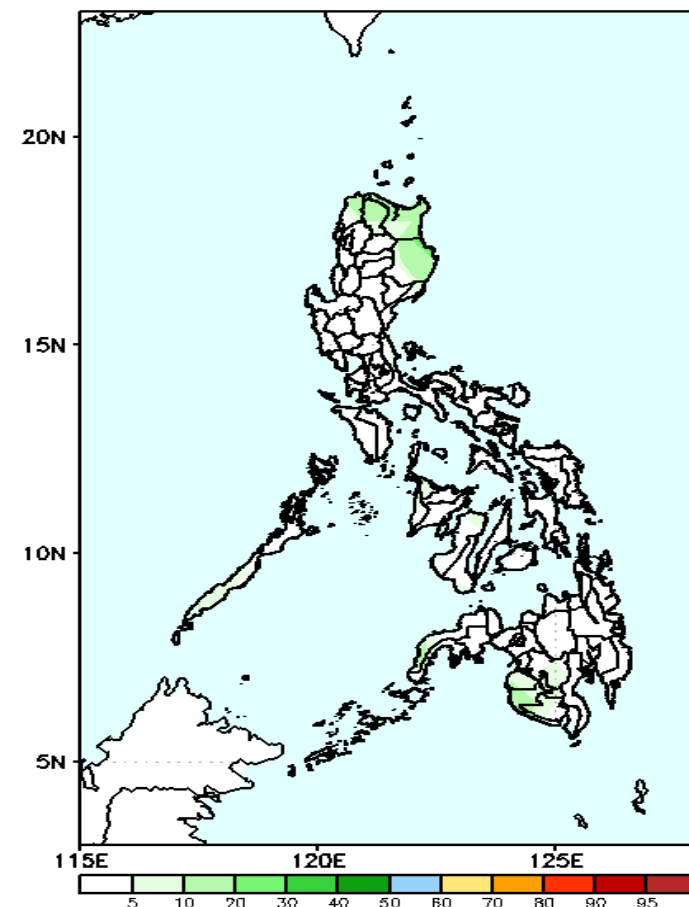
Less probability of rainfall to exceed 100mm in most parts of the country is expected during the forecast period.

GEFS Week-2 Exceedance Prob. > 150mm  
Valid: 20211115 - 20211121



Less probability of rainfall to exceed 150mm in most parts of the country is expected during the forecast period.

GEFS Week-2 Exceedance Prob. > 200mm  
Valid: 20211115 - 20211121

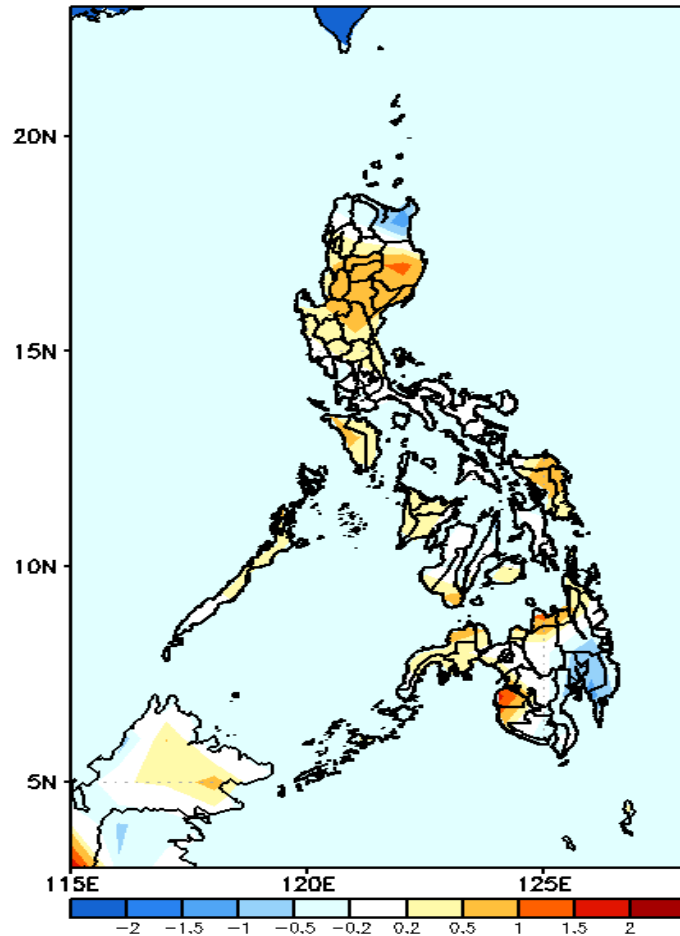


Less probability of rainfall to exceed 200mm in most parts of the country is expected during the forecast period.



# GEFS Week-1 & 2 Forecasts: T2m Anomaly

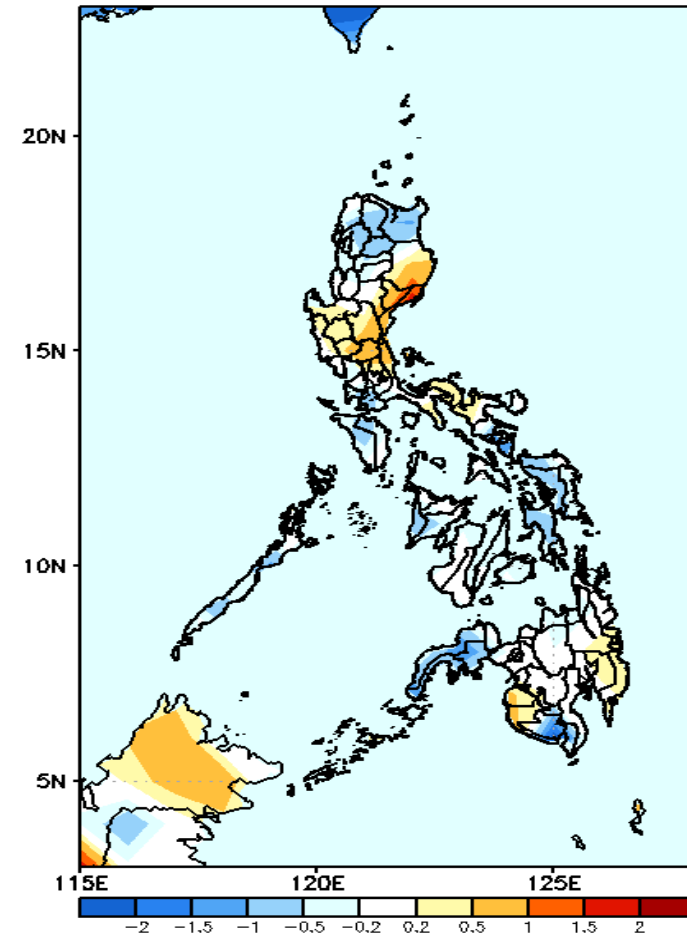
GEFS Week-1 T2m Anomaly  
Valid: 20211108 - 20211114



## 2m Temperature Week 1: Nov 08-14, 2021

Slightly warmer to warmer than average surface air temperature will likely experience in most parts of the country except in Cagayan and Davao Region where slightly warmer temperature is expected during the forecast period.

GEFS Week-2 T2m Anomaly  
Valid: 20211115 - 20211121



## 2m Temperature Week 2: Nov 15-21, 2021

Slightly cooler to cooler than average surface air temperature will likely experience in most parts of the country except in Isabela, Quirino, Central Luzon where slightly warmer temperature is expected during the forecast period.